



PRODUCT BRIEF

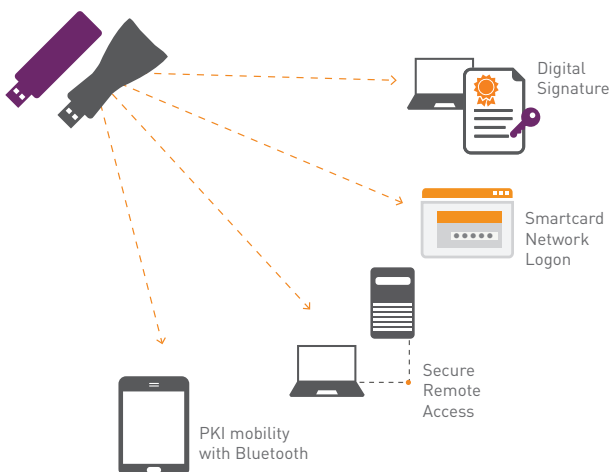
SafeNet Authentication Client

The Power to Easily Manage Gemalto's PKI-based Authentication

SafeNet Authentication Client is a unified middleware client that manages Gemalto's extensive SafeNet portfolio of certificate-based authenticators, including eToken, IDPrime smart cards, iKey smart card, USB and software-based devices. Offering full backward compatibility and incorporating features from previous middleware versions, SafeNet Authentication Client ensures complete support for all currently deployed eToken and iKey devices, as well as IDPrime MD and .NET smart cards.

SafeNet Authentication Client links applications to Gemalto's PKI authenticators, providing full local administration and support for multiple advanced security applications such as digital signing, pre-boot authentication and disk encryption. With SafeNet Authentication Client, private keys can be generated and stored on-board highly secure smart card-based authenticators allowing users to securely carry all their digital credentials wherever they go.

Leverage your PKI Solution for multiple Use Cases



Benefits

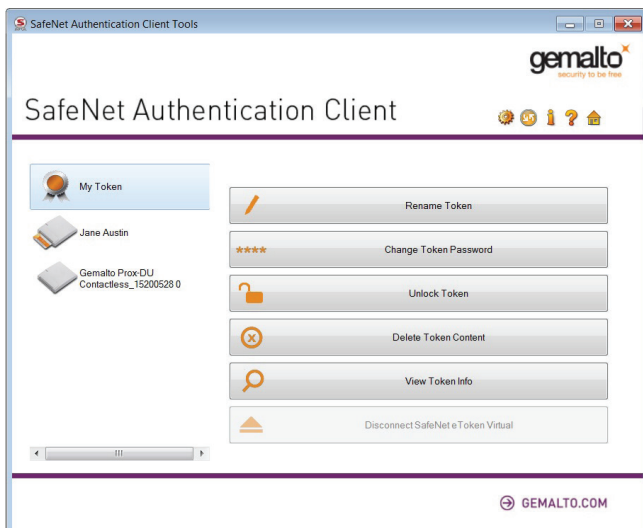
- > Transparently operates with any standard certificate-based security application
- > Consolidated & simplified management tools allow users to manage their own cards/tokens and certificates
- > Supports secure access, data encryption and digital signing—all with a single authenticator
- > Streamlines security operations by allowing organizations to deploy multiple security applications on a single platform
- > Allows organizations to use certificate-enabled security capabilities from any client or server thanks to multi-platform support

Features

- > Strong two-factor authentication for network and data protection
- > Support for Common Criteria and FIPS certified devices
- > Full support for IDPrime MD smart cards, including Multi-slots support and PIN Quality modifications
- > Support for PIN Pad Readers
- > Enables local administration and usage of devices
- > Support for full client customization, including security configuration, policies and user interface
- > Seamless integration with any certificate-enabled application based on industry standard APIs
- > Enables enhanced password management applications for protecting PCs and securing on-site local network access, using eToken Network Logon or Gemalto IDGo Credential Provider
- > Support for Virtual Keyboard enables you to enter passwords without using a physical keyboard, providing protection against kernel level keyloggers
- > Common look and feel across all platforms

A Unified Solution for All Users

SafeNet Authentication Client is available for Windows, Mac, and Linux, so your organization can take full advantage of certificate-based security solutions ranging from strong authentication, encryption and digital signing, from virtually any device, including mobile. Gemalto's MobilePKI solutions are fully compatible with SafeNet Authentication Client and allow organizations to easily extend PKI security to mobile devices.



SAC management tools reduce helpdesk costs by allowing users to maintain their own cards/tokens and certificates

About Gemalto's SafeNet Identity and Data Protection Solutions

Gemalto's portfolio of SafeNet Identity and Data Protection solutions enables enterprises, financial institutions and governments to protect data, digital identities, payments and transactions—from the edge to the core. Our solutions take a data-centric approach to security with innovative encryption methods, best-in-class crypto management, and strong authentication and identity management to help customers protect what matters, where it matters.

Technical Specifications

Supported operating systems

- > Windows Server 2008 R2 SP1 (32-bit, 64-bit)
- > Windows Server 2008 SP2 (32-bit, 64-bit)
- > Windows Server 2012 and 2012 R2 (64-bit)
- > Windows Server 2016 (64-bit)
- > Windows 7 SP1 (32-bit, 64-bit)
- > Windows 8 (32-bit, 64-bit)
- > Windows 8.1 (32-bit, 64-bit)
- > Windows 10 (32-bit, 64-bit)

Mac:

- > MAC OS X 10.11.6, 10.12.3

Linux Distributions:

- > Ubuntu 13.10, 14.04, CentOS 6.6, 7.0, Red Hat 6.6, 7.0, USE Linux enterprise desktop 11.3, 12.0, Fedora 20, Debian 7.7

Supported APIs

- > PKCS#11 V2.20, MS CryptoAPI and CNG (CSP, KSP), Mac Keychain (TokenD), PC/SC

Supported cryptographic algorithms

- > 3DES, SHA-256, RSA up to 2048-bit, Elliptic Curve Cryptography (ECC)

Supported CAs

- > Microsoft, Entrust, VeriSign

Supported Browsers

- > Firefox
- > Internet Explorer
- > Microsoft Edge (does not support certificate enrollment)
- > Chrome (does not support certificate enrollment)

Supported SafeNet Authenticators include*:

- > IDPrime MD 840
- > IDPrime MD 3840
- > IDPrime MD 830-FIPS
- > IDPrime MD 830-ICP
- > IDPrime MD 3810
- > IDPrime MD 3811
- > IDPrime .NET (only SAC PKCS#11 and IDGo 800 Minidriver interfaces)
- > SafeNet eToken 5110
- > SafeNet eToken 5110 CC
- > SafeNet eToken 5110 FIPS
- > SafeNet eToken 5110 FIPS HID
- > SafeNet eToken 5110 HID
- > SafeNet eToken 7300
- > SafeNet eToken 7300-HID
- > SafeNet Virtual Token

** For a full list of backward compatible supported authenticators, please refer to the latest customer release notes.*

Contact Us: For all office locations and contact information, please visit safenet.gemalto.com

Follow Us: blog.gemalto.com/security

 GEMALTO.COM

gemalto
security to be free